

Drawing Reference	Dimensions in millimetres		
	Type M1	Type M2	Type M3
A	38.89	52.37	77.77
B	31.75	44.45	63.50
C	19.05	25.40	34.92
D	29.36	41.30	60.32
E	15.87	22.22	31.75
F	19.05	25.40	44.45
G	6.35	9.52	9.52
H	11.10	15.87	25.40
J	3.96	4.75	4.75
K \varnothing	3.00	4.00	7.00
L	19.05	22.22	25.40
M \varnothing	4.00	6.00	9.00
N	19.05	14.27	25.40
O	M3 x 5Dp.	M4 x 5Dp.	M5 x 6Dp.

Mounting holes 'O' top-bottom faces

Shaft arrangement 'A' illustrated

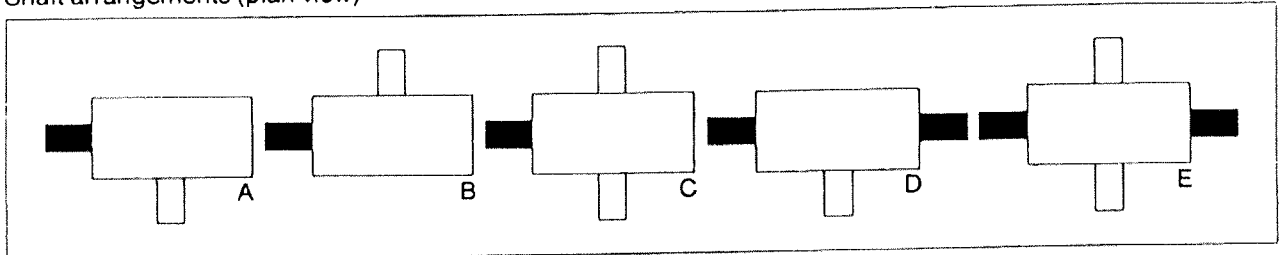
Performance Data

	Type M1		Type M2		Type M3	
	Phosphor bronze	Anti-backlash	Phosphor bronze	Anti-backlash	Phosphor bronze	Anti-backlash
Wormwheel	10,000	3,000	10,000	3,000	10,000	3,000
Maximum input speed RPM	5	60	12	250	20	1,250
Maximum friction torque at input g/cm	see graph	0.009	see graph	0.17	see graph	0.29
Maximum continuous output torque Nm	30		30		30	
Backlash at outputs - minutes	0.08	0.08	0.2	0.2	0.6	0.6
Approximate weight Kg						

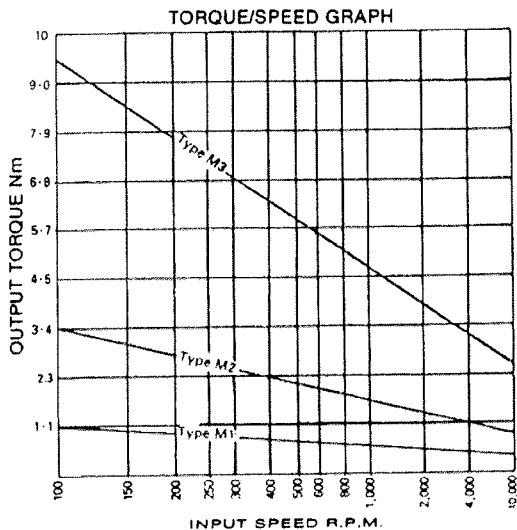
Available Ratios

	6	7.5	8	8.33	10	12	12.5	15	16	16.66	17	20	21.5	24	25	30	32	36	40	42	45	48	50	60	70	80	90	100	
Type M1		+		+		+		+		+	+				+									+	+				
Type M2			+	+		+	+		+	+	+		+	+	+		+	+	+		+	+	+					+	+
Type M3	+	+			+	+		+	+	+		+				+	+	+		+	+		+	+	+		+	+	

Shaft arrangements (plan view)



Input shafts shown Output shafts shown



These standard gearboxes are available in many shaft arrangements and ratios. For an application requiring minimum backlash, spring loaded wormwheels may be incorporated.

The input shaft is mounted in precision ballraces, the output shaft in self-lubricating bearings and the final assembly packed with grease Mobilith SHC 220 having a temperature range of -40 C to +150 C

Safety Data Sheets are available online from www.exxonmobil.com

When ordering state "Worm reduction gearbox" - type, ratio, shaft arrangement and standard or anti-backlash wormwheel.

Materials:

- Case: - Aluminium Alloy
- Worms: - BS970 220M07 Hardened
- Wormwheels: - Phosphor Bronze PB1
- Shafts: - BS970 220M07