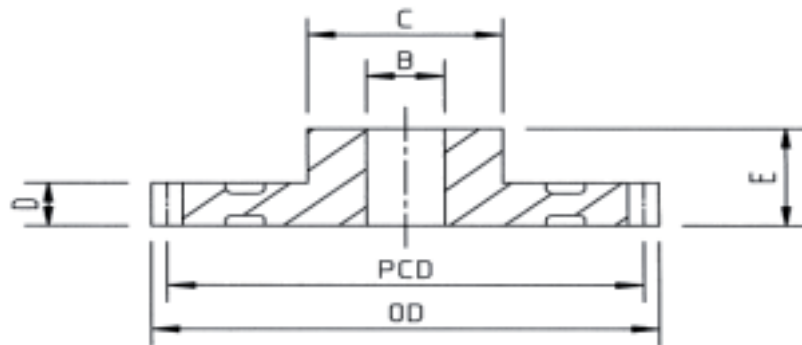


Plastic Moulded Spur Gear 1.25M 20°PA

Material - Hostaform

Dimensions in mm

No. of Teeth	O.D	P.C.D	Bore "B"	Boss "C"	Width "D"	Length " E"	Order Code
12	17.50	15.00	5	9	10	19	S1.2 012H
13	18.75	16.25	5	9	10	19	S1.2 013H
14	20.00	17.50	5	9	10	19	S1.2 014H
15	21.25	18.75	5	9	10	19	S1.2 015H
16	22.50	20.00	5	9	10	19	S1.2 016H
17	23.75	21.25	5	9	10	19	S1.2 017H
18	25.00	22.50	5	12	10	19	S1.2 018H
19	26.25	23.75	5	12	10	19	S1.2 019H
20	27.50	25.00	5	12	10	19	S1.2 020H
21	28.75	26.25	6	15	10	19	S1.2 021H
22	30.00	27.50	6	15	10	19	S1.2 022H
23	31.25	28.75	6	15	10	19	S1.2 023H
24	32.50	30.00	6	15	10	19	S1.2 024H
25	33.75	31.25	6	15	10	19	S1.2 025H
26	35.00	32.50	6	18	10	19	S1.2 026H
27	36.25	33.75	6	18	10	19	S1.2 027H
28	37.50	35.00	8	18	10	19	S1.2 028H
30	40.00	37.50	8	18	10	19	S1.2 030H
32	42.50	40.00	8	18	10	19	S1.2 032H
35	46.25	43.75	8	18	10	19	S1.2 035H
36	47.50	45.00	8	18	10	19	S1.2 036H
38	50.00	47.50	8	18	10	19	S1.2 038H
40	52.50	50.00	8	18	10	19	S1.2 040H
42	55.00	52.50	8	18	10	19	S1.2 042H
45	58.75	56.25	8	21	10	19	S1.2 045H
48	62.50	60.00	8	21	10	19	S1.2 048H
50	65.00	62.50	8	21	10	19	S1.2 050H
52	67.50	65.00	10	21	10	19	S1.2 052H
54	70.00	67.50	10	21	10	19	S1.2 054H



Plastic Moulded Spur Gear 1.25M 20'PA

Material - Hostaform

Dimensions in mm

No. of Teeth	O.D	P.C.D	Bore "B"	Boss "C"	Width "D"	Length " E"	Order Code
55	71.25	68.75	10	21	10	19	S1.2 055H
56	72.50	70.00	10	21	10	19	S1.2 056H
60	77.50	75.00	10	21	10	19	S1.2 060H
64	82.50	80.00	10	21	10	19	S1.2 064H
65	83.75	81.25	10	21	10	19	S1.2 065H
70	90.00	87.50	10	21	10	19	S1.2 070H
72	92.50	90.00	12	21	10	19	S1.2 072H
75	96.25	93.75	12	21	10	19	S1.2 075H
80	102.5	100.00	12	24	10	19	S1.2 080H
90	115.00	112.50	12	24	10	19	S1.2 090H
100	127.50	125.00	12	24	10	19	S1.2 100H
110	140.00	137.50	12	24	10	19	S1.2 110H