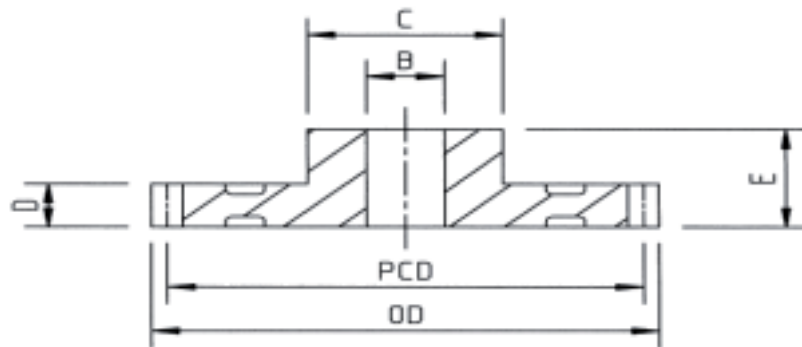


Plastic Moulded Spur Gear 1.0M 20'PA

Material - Hostaform

Dimensions in mm

No. of Teeth	O.D	P.C.D	Bore "B"	Boss "C"	Width "D"	Length " E"	Order Code
12	14	12	4	9	9	17	S1.0 012H
13	15	13	4	9	9	17	S1.0 013H
14	16	14	4	9	9	17	S1.0 014H
15	17	15	4	9	9	17	S1.0 015H
16	18	16	4	9	9	17	S1.0 016H
17	19	17	4	9	9	17	S1.0 017H
18	20	18	4	9	9	17	S1.0 018H
19	21	19	4	9	9	17	S1.0 019H
20	22	20	4	9	9	17	S1.0 020H
21	23	21	5	12	9	17	S1.0 021H
22	24	22	5	12	9	17	S1.0 022H
23	25	23	5	12	9	17	S1.0 023H
24	26	24	6	15	9	18	S1.0 024H
25	27	25	6	15	9	18	S1.0 025H
26	28	26	6	15	9	18	S1.0 026H
27	29	27	6	15	9	18	S1.0 027H
28	30	28	6	15	9	18	S1.0 028H
30	32	30	6	15	9	18	S1.0 030H
32	34	32	6	18	9	18	S1.0 032H
35	37	35	8	18	9	18	S1.0 035H
36	38	36	8	18	9	18	S1.0 036H
38	40	38	8	18	9	18	S1.0 038H
40	42	40	8	18	9	18	S1.0 040H
42	44	42	8	18	9	18	S1.0 042H
45	47	45	8	18	9	18	S1.0 045H
48	50	48	8	18	9	18	S1.0 048H
50	52	50	8	18	9	18	S1.0 050H
52	54	52	8	21	9	18	S1.0 052H
54	56	54	8	21	9	18	S1.0 054H



Plastic Moulded Spur Gear 1.0M 20'PA

Material - Hostaform

Dimensions in mm

No. of Teeth	O.D	P.C.D	Bore "B"	Boss "C"	Width "D"	Length " E"	Order Code
55	57	55	8	21	9	18	S1.0 055H
56	58	56	8	21	9	18	S1.0 056H
58	60	58	8	21	9	18	S1.0 058H
60	62	60	8	21	9	18	S1.0 060H
64	66	64	10	21	9	18	S1.0 064H
65	67	65	10	21	9	18	S1.0 065H
70	72	70	10	21	9	18	S1.0 070H
72	74	72	10	21	9	18	S1.0 072H
75	77	75	10	21	9	18	S1.0 075H
80	82	80	10	21	9	18	S1.0 080H
85	87	85	10	21	9	18	S1.0 085H
90	92	90	10	21	9	18	S1.0 090H
100	102	100	12	24	9	18	S1.0 100H
110	112	110	12	24	9	18	S1.0 110H
120	122	120	12	24	9	18	S1.0 120H
130	132	130	12	24	9	18	S1.0 130H
140	142	140	12	24	9	18	S1.0 140H