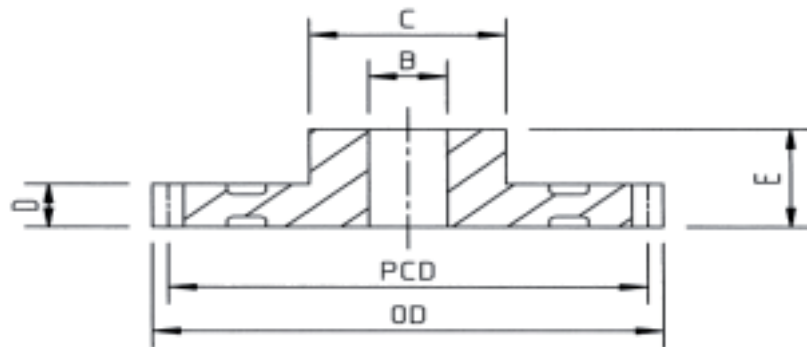


Plastic Moulded Spur Gear 0.7M 20'PA

Material - Hostaform

Dimensions in mm

No. of Teeth	O.D	P.C.D	Bore "B"	Boss "C"	Width "D"	Length " E"	Order Code
12	9.8	8.4	3	6	6	15	S0.7 012H
13	10.5	9.1	3	6	6	15	S0.7 013H
14	11.2	9.8	3	6	6	15	S0.7 014H
15	11.9	10.5	3	6	6	15	S0.7 015H
16	12.6	11.2	4	9	6	15	S0.7 016H
17	13.3	11.9	4	9	6	15	S0.7 017H
18	14.0	12.6	4	9	6	15	S0.7 018H
19	14.7	13.3	4	9	6	15	S0.7 019H
20	15.4	14.0	4	9	6	15	S0.7 020H
21	16.1	14.7	4	9	6	15	S0.7 021H
22	16.8	15.4	4	9	6	15	S0.7 022H
23	17.5	16.1	4	9	6	15	S0.7 023H
24	18.2	16.8	4	9	6	15	S0.7 024H
25	18.9	17.5	6	9	6	15	S0.7 025H
26	19.6	18.2	6	9	6	15	S0.7 026H
27	20.3	18.9	6	9	6	15	S0.7 027H
28	21.0	19.6	6	9	6	15	S0.7 028H
30	22.4	21.0	6	12	6	15	S0.7 030H
32	23.8	22.4	6	12	6	15	S0.7 032H
35	25.9	24.5	6	15	6	15	S0.7 035H
36	26.6	25.2	6	15	6	15	S0.7 036H
38	28.0	26.6	6	15	6	15	S0.7 038H
40	29.4	28.0	6	15	6	15	S0.7 040H
42	30.8	29.4	6	18	6	15	S0.7 042H
45	32.9	31.5	6	18	6	15	S0.7 045H
48	35.0	33.6	8	18	6	15	S0.7 048H
50	36.4	35.0	8	18	6	15	S0.7 050H
52	37.8	36.4	8	18	6	15	S0.7 052H
54	39.2	37.8	8	18	6	15	S0.7 054H



Plastic Moulded Spur Gear 0.7M 20'PA

Material - Hostaform

Dimensions in mm

No. of Teeth	O.D	P.C.D	Bore "B"	Boss "C"	Width "D"	Length " E"	Order Code
55	39.9	38.5	8	18	6	15	S0.7 055H
56	40.6	39.2	8	18	6	15	S0.7 056H
60	43.4	42.0	8	18	6	15	S0.7 060H
64	46.2	44.8	8	18	6	15	S0.7 064H
65	46.9	45.5	8	18	6	15	S0.7 065H
70	50.4	49.0	8	18	6	15	S0.7 070H
72	51.8	50.4	8	18	6	15	S0.7 072H
75	53.9	52.5	10	18	6	15	S0.7 075H
80	57.4	56.0	10	21	6	15	S0.7 080H
90	64.4	63.0	10	21	6	15	S0.7 090H
96	68.6	67.2	10	21	6	15	S0.7 096H
100	71.4	70.0	10	21	6	15	S0.7 100H
120	85.4	84.0	10	21	6	15	S0.7 120H