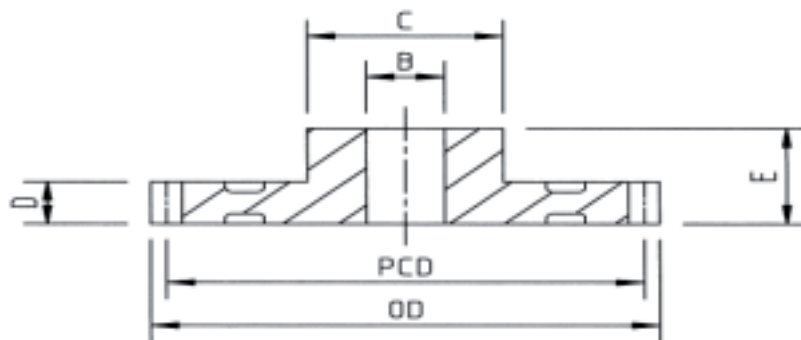


## Plastic Moulded Spur Gear 0.5M 20'PA

### Material - Hostaform

Dimensions in mm

No. of Teeth	O.D	P.C.D	Bore "B"	Boss "C"	Width "D"	Length " E"	Order Code
12	7.0	6.0	2	4	3	7	S0.5 012H
13	7.5	6.5	2	4	3	7	S0.5 013H
14	8.0	7.0	2	5	3	7	S0.5 014H
15	8.5	7.5	3	6	3	10	S0.5 015H
16	9.0	8.0	3	6	3	10	S0.5 016H
17	9.5	8.5	3	6	3	10	S0.5 017H
18	10.0	9.0	4	8	3	10	S0.5 018H
19	10.5	9.5	4	8	3	10	S0.5 019H
20	11.0	10.0	4	8	3	10	S0.5 020H
21	11.5	10.5	4	8	3	10	S0.5 021H
22	12.0	11.0	4	10	3	10	S0.5 022H
23	12.5	11.5	4	10	3	10	S0.5 023H
24	13.0	12.0	4	10	3	10	S0.5 024H
25	13.5	12.5	4	10	3	10	S0.5 025H
26	14.0	13.0	4	10	3	10	S0.5 026H
27	14.5	13.5	4	10	3	10	S0.5 027H
28	15.0	14.0	4	10	3	10	S0.5 028H
30	16.0	15.0	4	12	3	10	S0.5 030H
32	17.0	16.0	4	12	3	10	S0.5 032H
35	18.5	17.5	4	12	3	10	S0.5 035H
36	19.0	18.0	4	12	3	10	S0.5 036H
38	20.0	19.0	4	12	3	10	S0.5 038H
40	21.0	20.0	4	12	3	10	S0.5 040H
42	22.0	21.0	4	12	3	10	S0.5 042H
45	23.5	22.5	4	12	3	10	S0.5 045H
48	25.0	24.0	6	15	3	10	S0.5 048H
50	26.0	25.0	6	15	3	10	S0.5 050H
52	27.0	26.0	6	15	3	10	S0.5 052H
54	28.0	27.0	6	15	3	10	S0.5 054H



## Plastic Moulded Spur Gear 0.5M 20'PA

### Material - Hostaform

Dimensions in mm

No. of Teeth	O.D	P.C.D	Bore "B"	Boss "C"	Width "D"	Length " E"	Order Code
55	28.5	27.5	6	15	3	10	S0.5 055H
56	29.0	28.0	6	15	3	10	S0.5 056H
60	31.0	30.0	6	15	3	10	S0.5 060H
64	33.0	32.0	6	15	3	10	S0.5 064H
65	33.5	32.5	6	15	3	10	S0.5 065H
70	36.0	35.0	6	15	3	10	S0.5 070H
72	37.0	36.0	6	15	3	10	S0.5 072H
75	38.5	37.5	6	15	3	10	S0.5 075H
80	41.0	40.0	6	15	3	10	S0.5 080H
90	46.0	45.0	6	15	3	10	S0.5 090H
96	49.0	48.0	6	15	3	10	S0.5 096H
100	51.0	50.0	6	15	3	10	S0.5 100H
120	61.0	60.0	6	15	3	10	S0.5 120H